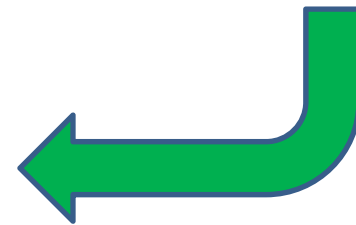
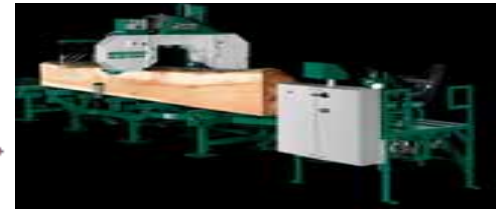
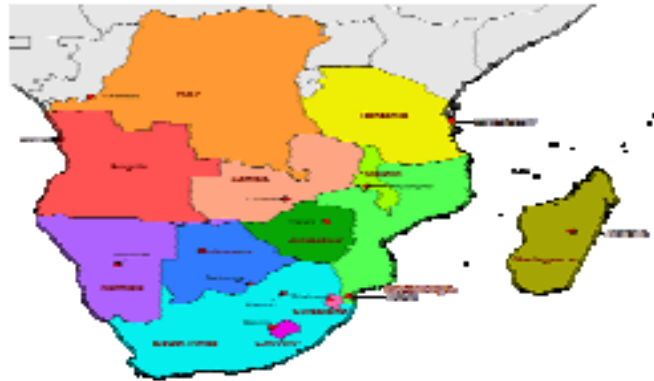




SADC TIMBER ASSOCIATION (STA)



Presentation to Best Practices In the Governance of Africa's Dry land Forests: Implications for Southern Africa

Date: 23rd October, 2013

By: Paul Makolosi email: p.makolosi@sterlingtimber.com





‘A reflection of a nation’s soul is in
the way its natural resources are
treated...’

paraphrased
Mahatima Gandhi





SADC Forestry Protocols

ARTICLE 18: INDUSTRY, TRADE AND INVESTMENT

State Parties which have substantial forest-based industries within their territories shall:

- encourage and promote the establishment of regional, and where necessary, national and sub-national timber associations within the forestry sector that can play a role in achieving the objectives of this Protocol, including the development of voluntary codes of conduct, and networking for the purposes of sharing trade information;





SADC Forestry Protocols Cont'd

- Encourage the participation of traditional, community and private-sector operators in the forestry sector in national and regional processes for the development of markets for, and trade in the products from sustainably managed forests, including, if determined to be appropriate, the development and promotion of specific voluntary certification standards and guidelines;
- Adopt national measures and support regional initiatives to promote investment in sustainable forest management;
- Support the expansion of sustainable markets and sustainable trade in forest products throughout the Region.





Why SADC Timber Association (STA)?

- SADC Forestry sector has great potential to deliver:
 - consistent quality products
 - Put a strong foot print on world timber and wood market
 - contribute significantly to socio-economic development in the member countries
- This success has eluded many countries in the region.
- Success and development in SADC forestry for over two decades has been held captive by:
 - Low production and manpower capacity development
 - Uncoordinated small scale operations with limited access to finance
 - Low access to market information
 - Inconsistent quality and conflicting quality standards
 - Trade and non- trade barriers within the region
 - Unsustainable use of forestry resources / illegal logging
- Global warming and the need to conserve trees, the competition for land use as population grow further makes it imperative for the Forestry Sector to demonstrate the value it brings to communities and nations.





The idea for STA formation

- The decision to form the STA was an output of the SADC FLEGT workshop held in Oct, 2011
- A task force was set up by the SADC FLEGT Working Group to develop the concept, framework and implementation plan
- The taskforce comprise:
 - Malawi
 - Mozambique
 - South Africa
 - Swaziland
 - Tanzania
 - Zambia
 - Zimbabwe





What's in it for members?

The SME

- Hardwood & plantations take decades to raise, limited resource yet we are selling without a controlling platform / cartel—improved profitability
- Training & capacity development—using regional resources & infrastructure
- Inter-country trade: woodlot owners, processors, construction firms, furniture makers, investors.
- Efficiency, yield improvement from benchmarking – more profit
- Technology receptor – adapt to regional use (R&D benefits)

The Country / SADC

- Vehicle for SADC Forestry Protocol implementation: Article 18.
- Vehicle for implementation of SADC FLEGT actions on illegal logging, uncontrolled timber trade, harmonisation of quality and standards, and promotion of fair and ethical timber trade.
- Job creation
- Forestry sector significant financial contribution from trade
- Creation of Plat-form for SADC regional investment opportunities





Case Study - Sweden

- Forestry area – 28 million hectares;
- Forestry constitute 31% of land area;
- Trading partners – over 100 countries;
- Contribution to GDP – about 3% vs 1.2% world average;
- SME contribution: 70 %
- Trade value – US\$15.5 billion in 2010.





Case Study - Sweden

Table 1. Swedish exports of selected forest products by importing region in 2009

Assortment	Importing region	Quantity 1000:s m ³	Value SEK 1000s	Share of quantity	Share of value
Sawn & planed softwood	Europe	8 455	16 073 871	69%	70%
	EU 27	7 613	14 111 444	62%	61%
	Africa	2 357	4 008 868	19%	17%
	Asia	1 287	2 673 224	11%	12%
	Total	12 252	23 103 596	100%	100%
Wood pulp & waste paper	Importing region	Quantity 1000:s m.t	Value SEK 1000s	Share of quantity	Share of value
	Europe	2 919	12 133 996	79%	80%
	EU 27	2 778	11 686 253	75%	77%
	Asia	718	2 721 963	19%	18%
	Middle East	71	251 861	2%	2%
Total	3 718	15 218 645	100%	100%	
Paper & paperboard	Europe	7 958	54 909 599	80%	82%
	EU 27	7 438	50 681 656	75%	75%
	Asia	1 402	8 625 401	14%	13%
	Middle East	333	1 936 938	3%	3%
	Total	9 907	67 225 113	100%	100%

Source: Statistics Sweden (Sweden's statistical databases).





Not only Sweden!

- Other developing countries, viz : Brazil, Guyana, Suriname, Paraguay and Chile, have achieved about 3% of DGP;
- SADC Region with commitment and dedication can achieve the same.

The STA is a vehicle for SADC to facilitate forestry contribution growth to GDP!





STA Vision

- **The catalyst for GREEN and THRIVING, timber for all TODAY and TOMORROW**





STA Mission

To develop, grow and serve the SADC timber sector to achieve:

- Resource sustainability
- Timber Promotion and Marketing
- Knowledge and Information Exchange
- Training and Skills Enhancement
- Timber Value-addition optimisation
- Non timber forestry products marketing: biomass, honey, mushroom etc

through partnership to promote ethical financial, technical, social and environmental development





Overall Objective

- To harmonise the Timber Industry Sector in the SADC Region into a meaningful economic sector out of which local producers, communities and governments will be able to realize meaningful economic benefits, ensuring a level marketing playing field on sawn timber and value-added timber products.





STA Main Functions

- Information gathering, analysis and sharing;
- Harmonise regulatory instruments;
- Building partnerships/networks regionally and internationally;
- Support and promote small and medium-scale forest enterprise;
- Facilitate Research and Development;





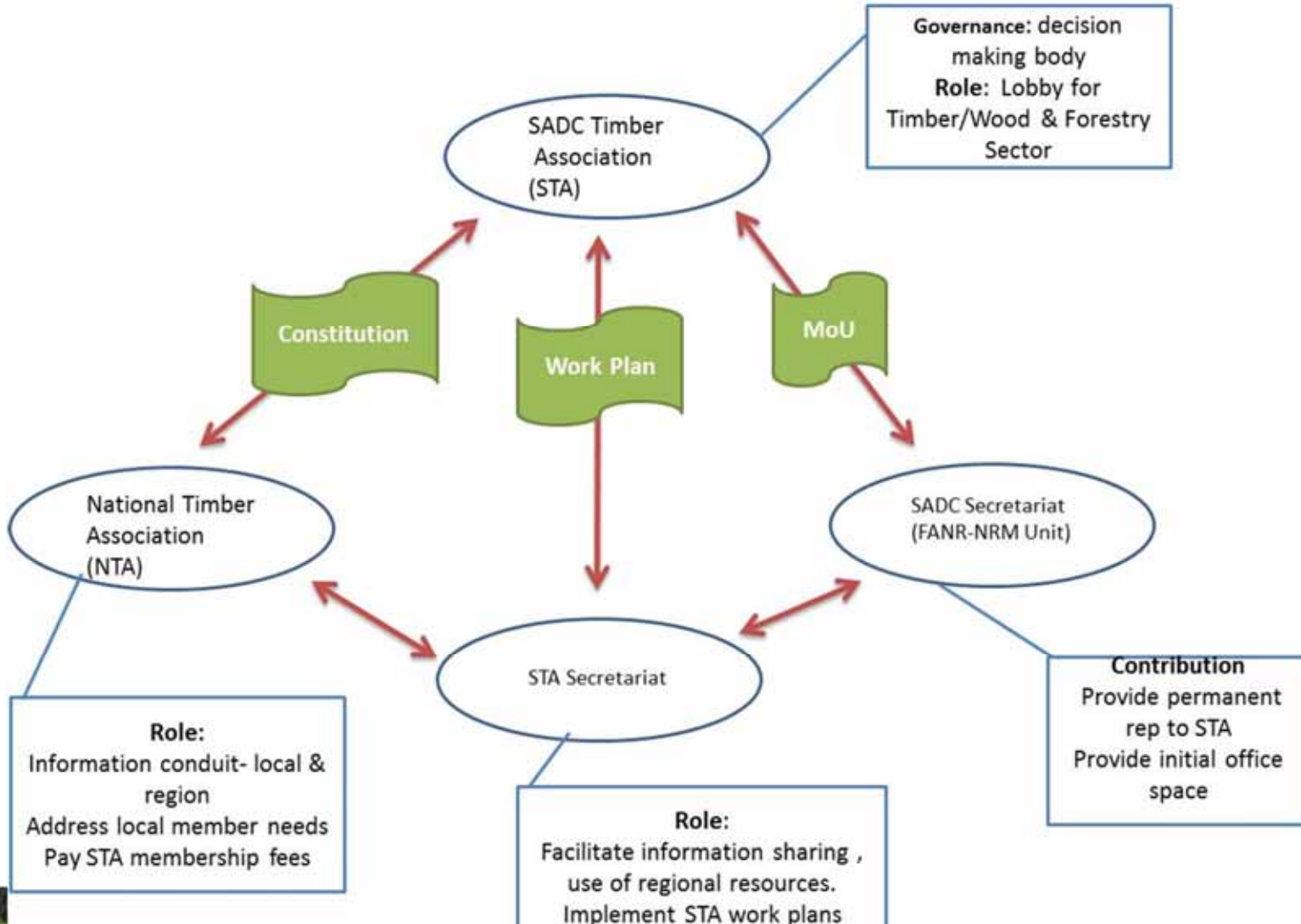
STA Main Functions

- Develop and harmonise standards in the timber industry;
- Facilitate training and skills enhancement;
- Promoting Value-Addition;
- Facilitate timber marketing and trade;
- Sourcing finance and technical support for the Association ;
- Promoting fair-trade and ethical business practice & sustainable resource utilisation.



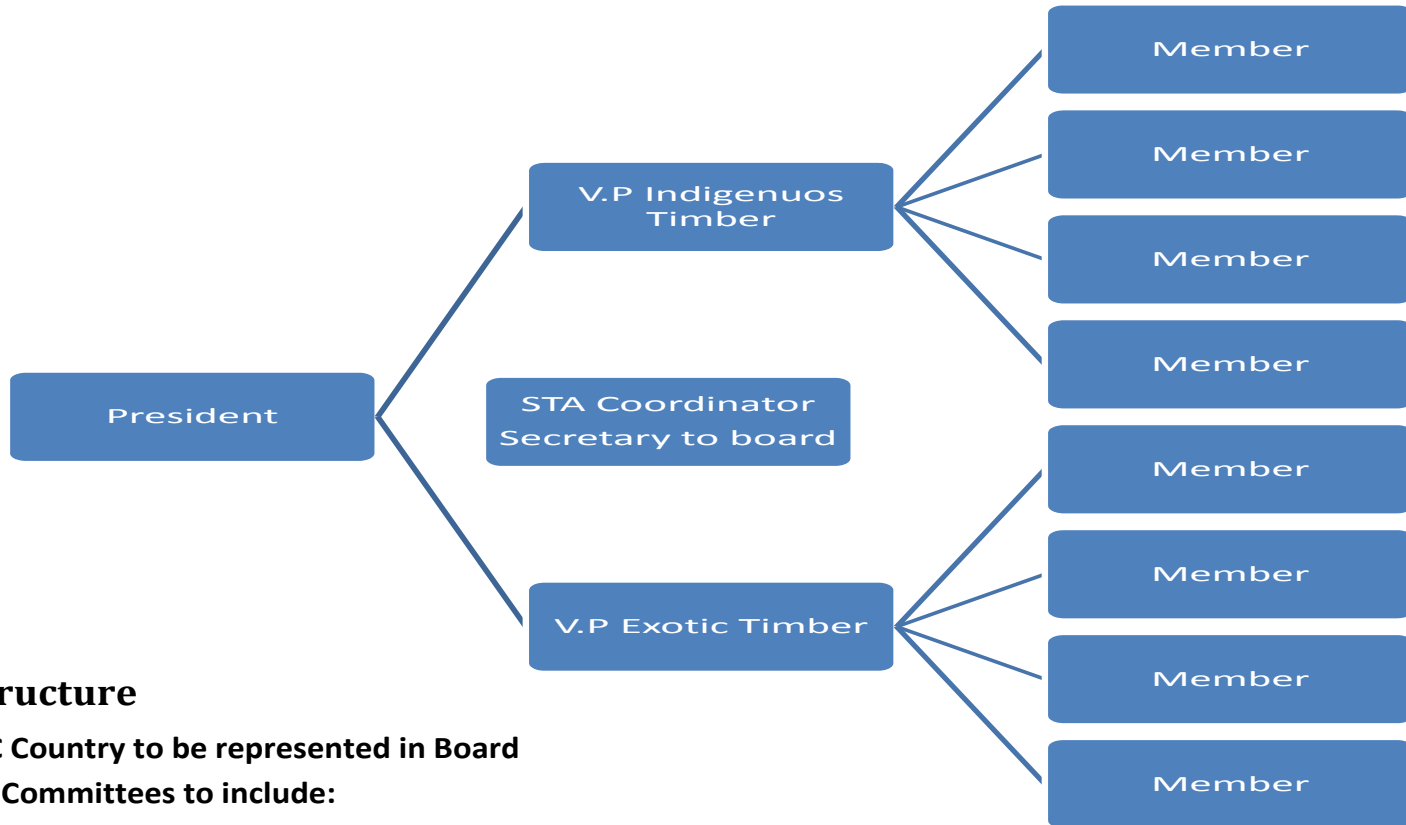


STA Structure, Roles & Responsibilities





STA Board Structure



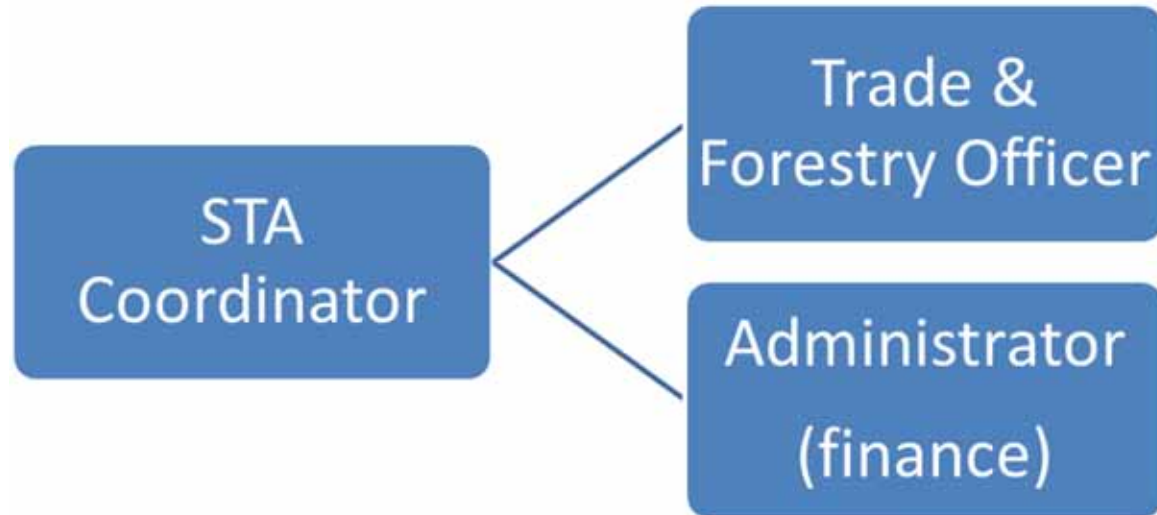
STA Board Structure

1. Every SADC Country to be represented in Board
2. Board Sub Committees to include:
 - a. Sustainable Forestry
 - b. Value Addition & Capacity Building
 - c. Marketing & Information Sharing
 - d. Finance, Administration & Regional Cooperation





STA Secretariat structure



Notes:

1. Legal and IT to be outsourced
2. Administrator to double up as finance resource
3. Structure may grow as STA is established and on need basis





Values & Guiding Principles

- Transparency and accountability
- Adherence to an agreed code of conduct and ethics
- Good corporate governance
- Equitable treatment and mutual respect
- Cooperation and unity of purpose among members
- STA should be a non-political and non-partisan body
- Gender sensitivity guides all STA sponsored interventions
- Professional and integrity
- Results orientation is the key to all STA operations





STA to promote Whole Tree Approach

- Traditional Timber milling uses only the logs
 - 50% of logs is converted into planks (Timber)
 - Outer slabs, tops , lops and saw dust just left around.
 - This remnant biomass was fuelling summer forest fires
- Biomass converted into Briquettes & Pellets to replace Charcoal from indigenous forests.
- Honey and mushrooms from the plantation to be exploited economically.





STA Task Force

- Mr. Paul Makolosi (Chairperson) – Malawi
- Mr. Steve Ngubane (Deputy Chairperson) - South Africa
- Mr. Malcolm Smith – Zimbabwe*
- Mr. Ben Elias – Tanzania
- Mr. Solomon Gamedze – Swaziland
- Ms. Odilia Chilekwa – Zambia
- Mr. Jorge Chacate - Mozambique

*Now late, will be remembered for his passion and diligence in STA work.





Conclusion



The SADC Timber Association's goal is to make Forest resources count by putting food on the table and money in the people's pockets sustainably





Vote Of Thanks

- Our funding partners: SADC FANR & GIZ
- Leaders & mentors:
 - Mr Nyambe Nyambe
 - Mr Moses Chakanga
 - Prof G Kowero
 - Dr Dennis Kayambazinthu
- SADC FLEGT participants
- STA Task Force: hardwork, commitment & Team Spirit
- SADC Forestry Directors- anchoring role
- Thank you for your Attention.

